

# INCANDESCENT PETROLEUM OR PARAFFIN LAMPS.

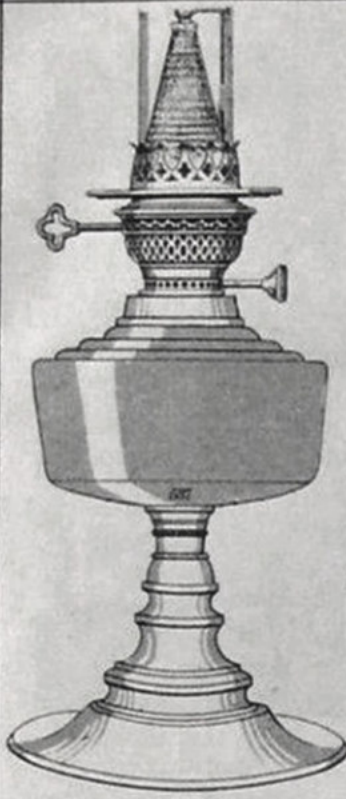
The Improved **Edina** is a burner with a **side draught**, and it can be fitted to any existing Duplex Screw Collar.  
The "**Thane**" is a **Centre Draught Lamp**; the Fount must go with the Burner. Burners only cannot be supplied.

## "THANE" SUNDRIES.

M 25	"THANE" PETROLEUM INCANDESCENT MANTLE.	9/6	per doz.
M 27	" " DOUBLE-PLY " " "	12/-	" "
" "	CHIMNEYS . . . . .	15/-	" "
" "	WICKS . . . . .	7/-	" "
" "	MANTLE RODS . . . . .	2/-	" "

20" "THANE" CENTRE DRAUGHT INCANDESCENT LAMP GIVES 150 CANDLE LIGHT, AND IS WARRANTED PERFECTLY SATISFACTORY IN USE.

A TIN CONE AND BRUSH IS SUPPLIED WITH EACH "THANE" LAMP FOR CLEANING AND TRIMMING.



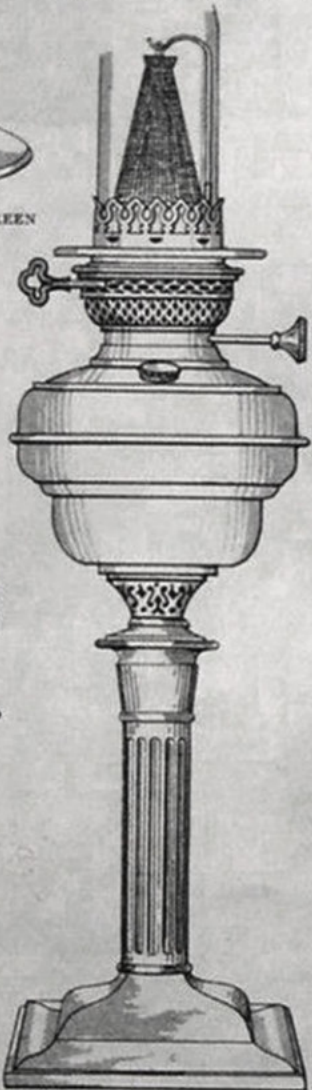
1471 IMPROVED EDINA, 537 GREEN GRAD., 16/8 ea. COMPLETE AS DRAWN. POLISHED BRASS STAND.



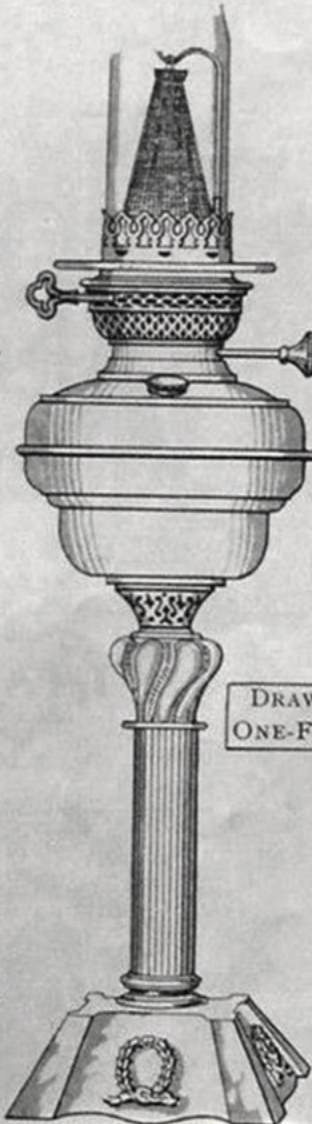
1533 "THANE" W.G. LIFTER. COMPLETE AS DRAWN, 27/ each.



1529 "THANE" LIFTER, 32/ each. WITH CHIMNEY AND MANTLE AS DRAWN. POLISHED BRASS.



1531 "THANE" LIFTER, 33/8 each. WITH CHIMNEY AND MANTLE AS DRAWN. POLISHED BRASS.



DRAWN TO ONE-FOURTH.

1475 "THANE" LIFTER, 43/8 each. WITH CHIMNEY AND MANTLE AS DRAWN. POLISHED BRASS LAMP.



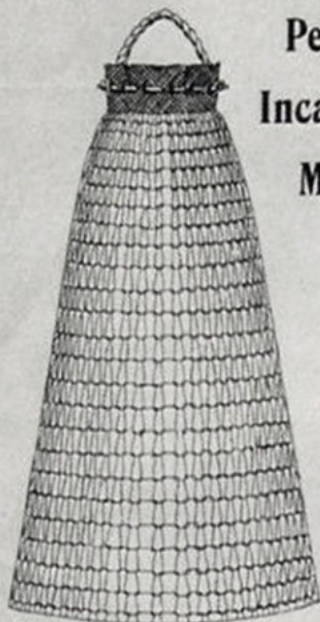
1530 "THANE" LIFTER, 32/ each. WITH CHIMNEY AND MANTLE AS DRAWN. POLISHED BRASS.

ROWATT 1914

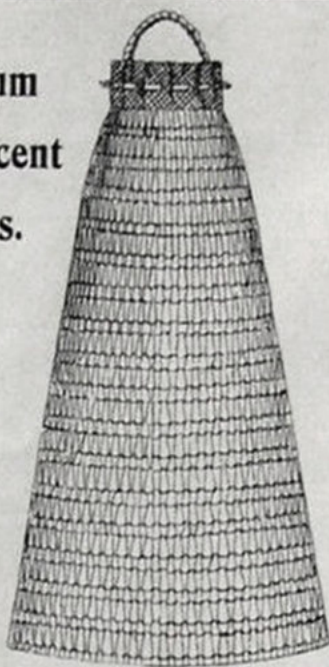
# Petroleum Incandescent Mantles.



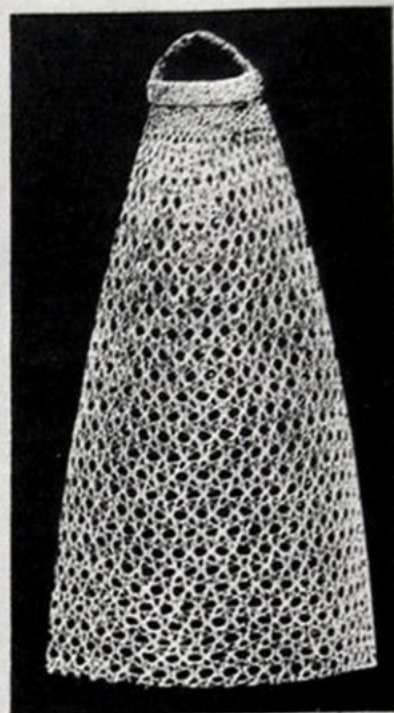
M 21  
FOR PETROLITE LAMP.  
SPECIAL EXTRA STRONG.  
CLOSE WOVEN MANTLE.  
7/ dos.



M 20  
PETROLEUM INCANDESCENT MANTLE.  
FOR IMPROVED "EDINA"  
FOR CENTRE DRAUGHT DO., } 8/ dos.  
FOR "VEGA"

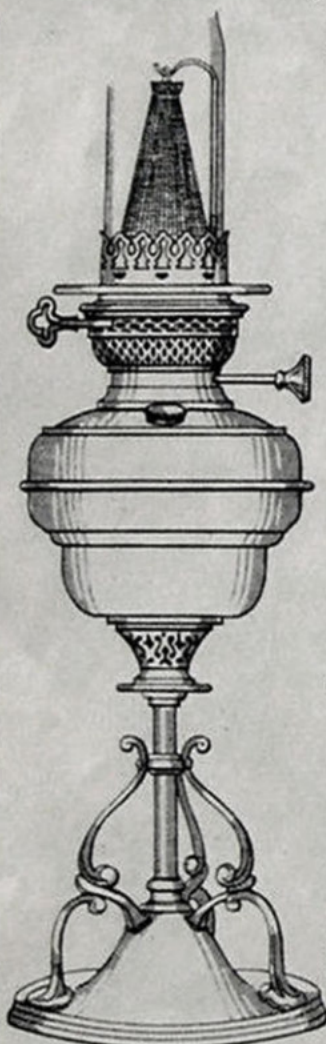


M 25  
"THANE" PETROLEUM INCANDESCENT  
MANTLE, 9/8 dos.

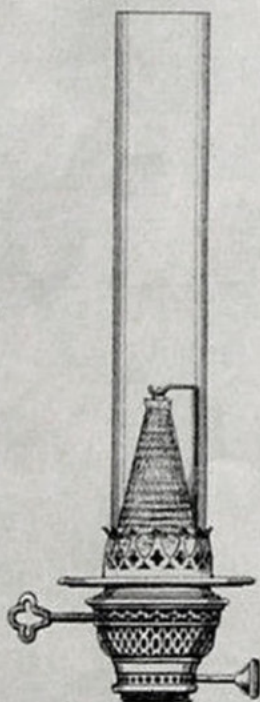


M 27  
"THANE" PETROLEUM INCANDESCENT  
MANTLE.  
SPECIAL DOUBLE-PLY QUALITY.  
12/ dos.  
HIGHLY RECOMMENDED.

M 19  
PETROLEUM INCANDESCENT MANTLE.  
FOR "EUGROS"  
FOR "LUCISCA" } 10/ dos.  
FOR "TORREX," No. 2

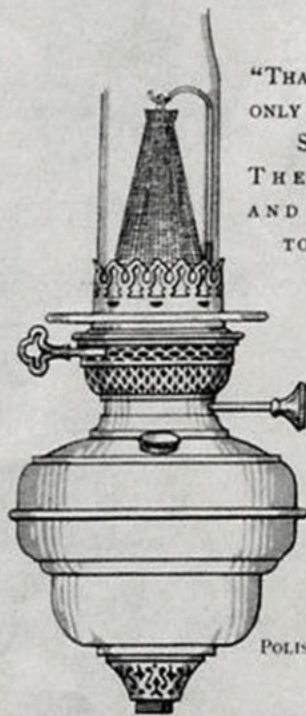


1476 "THANE" LIFTER,  
44/8 each.  
WITH CHIMNEY AND  
MANTLE AS DRAWN.  
POLISHED BRASS LAMP



IMPROVED "EDINA" PARAFFIN  
OR PETROLEUM OIL INCANDESCENT  
BURNER. BURNER COMPLETE WITH  
CHIMNEY, MANTLE SUPPORT, AND  
MANTLE, 8/2 each.  
BURNER ONLY, 6/10 each.  
CHIMNEYS ONLY . . . 8/ dos.  
MANTLES ONLY . . . 8/ "  
FITS DUPLEX SCREW COLLAR.  
4 in. GALLERY FOR DUPLEX GLOBE.

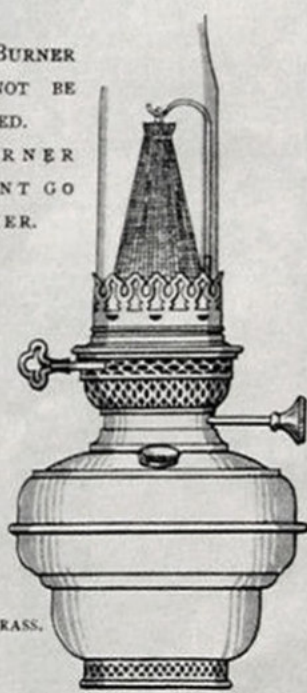
ADAPTING COLLAR FOR CATCH  
DUPLEX, 8d. each extra.



"THANE" INCANDESCENT CENTRE  
DRAUGHT SOCKET LAMP HEAD, WITH  
GALLERY AND LIFT.  
COMPLETE AS DRAWN, 23/8 each.  
6/8 each extra to 20" MARVEL,  
18/2 each extra to 12 S DUP. SL.  
FLINT.  
CHIMNEYS ONLY . . . 15/ dos.  
WICK . . . 7/ "  
MANTLE RODS . . . 2/ "

"THANE" BURNER  
ONLY CANNOT BE  
SUPPLIED.  
THE BURNER  
AND FOUNT GO  
TOGETHER.

POLISHED BRASS.



"THANE" INCANDESCENT CENTRE  
DRAUGHT RIM LAMP HEAD, WITH  
LIFT., WITHOUT GALLERY.  
COMPLETE AS DRAWN, 22/ each.  
5/6 each extra to 20" MARVEL  
RIM HEAD.  
GALLERY ONLY 6d. each.  
CHIMNEYS ONLY . . . 15/ dos.  
WICKS . . . 7/ "  
MANTLE RODS . . . 2/ "



"THANE" RIM HEAD,  
22/ each complete.  
POLISHED BRASS.

150 CANDLE-POWER.

A SATISFACTORY LAMP WITH VERY  
SMALL OIL CONSUMPTION.

"THANE" LAMPS AND LAMP HEADS ARE PRICED WITH  
CHIMNEYS AND NO. M 25 MANTLES AS DRAWN.

Rowatt 1914